

InterRidge Vents Database Ver. 2.1

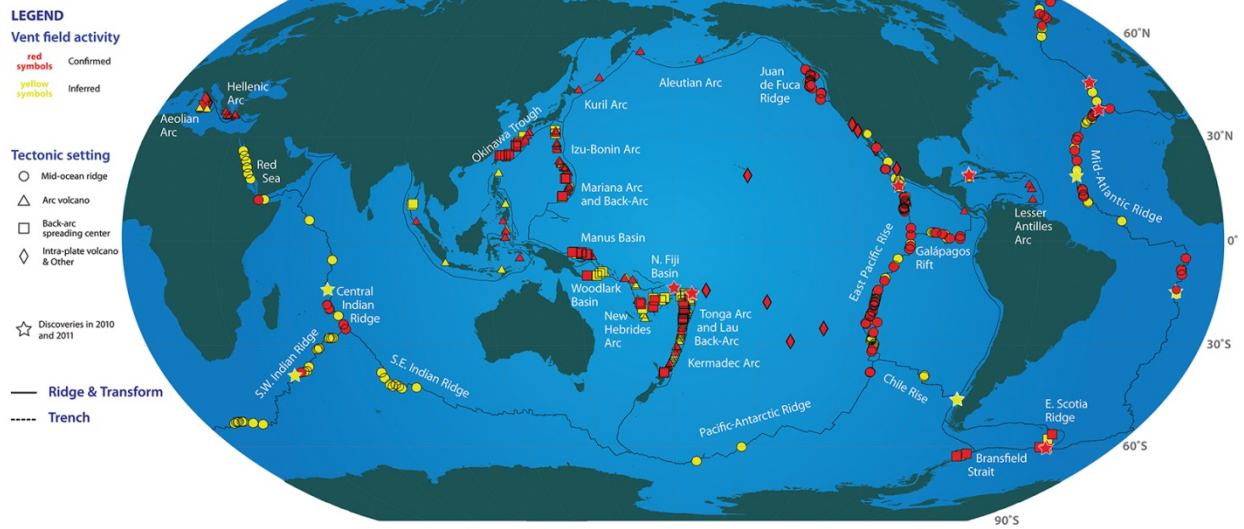


Figure 1 Global distribution of deep-sea hydrothermal vent sites. The western Pacific has been a frontier of research on arc and back-arc environments, and the Mariana back-arc represents a significant, underexplored region.

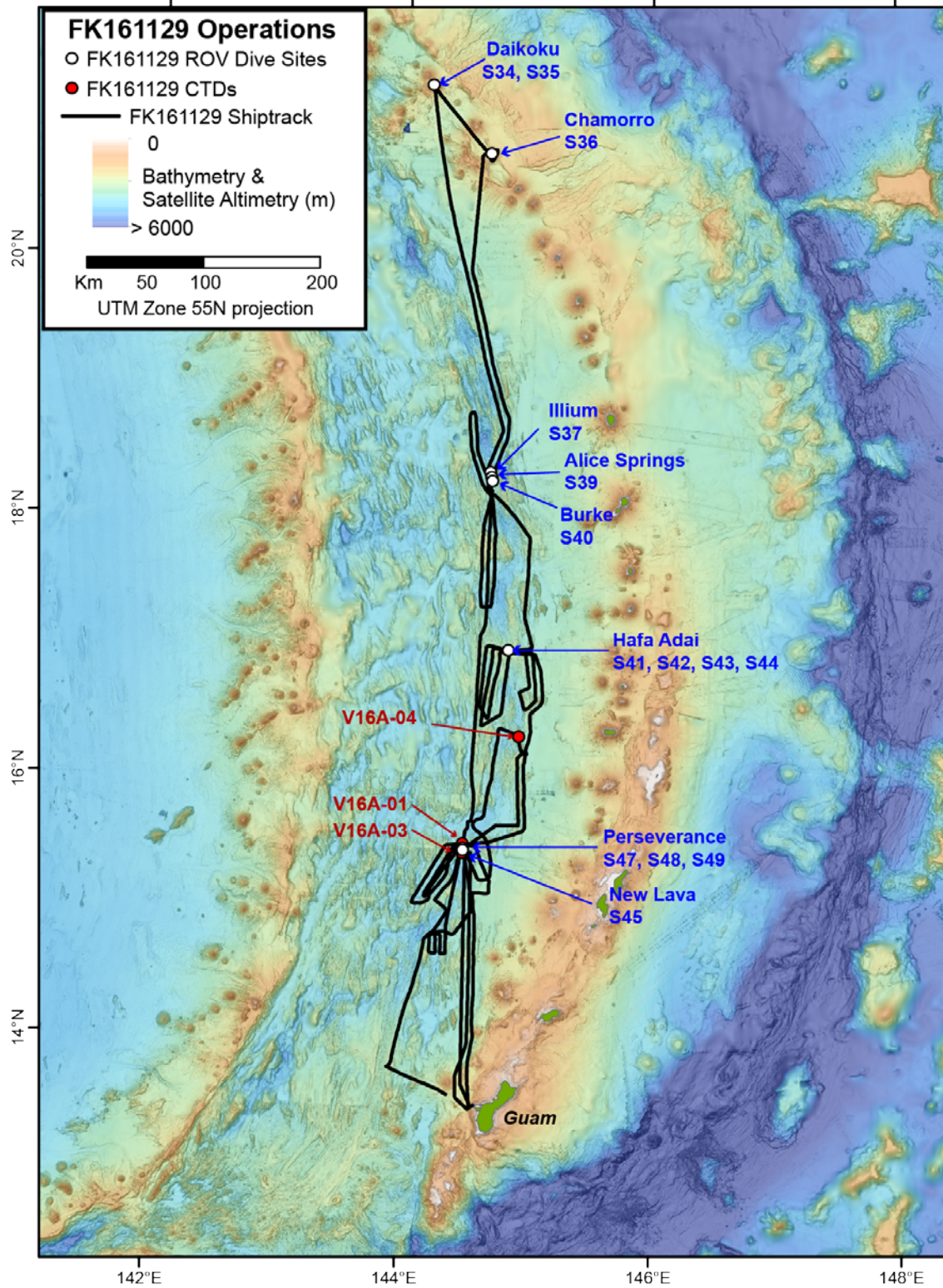


Figure 2 Cruise track for FK161129. Dive sites and CTD sites are indicated. EM302 mapping was conducted along most of the black track lines.



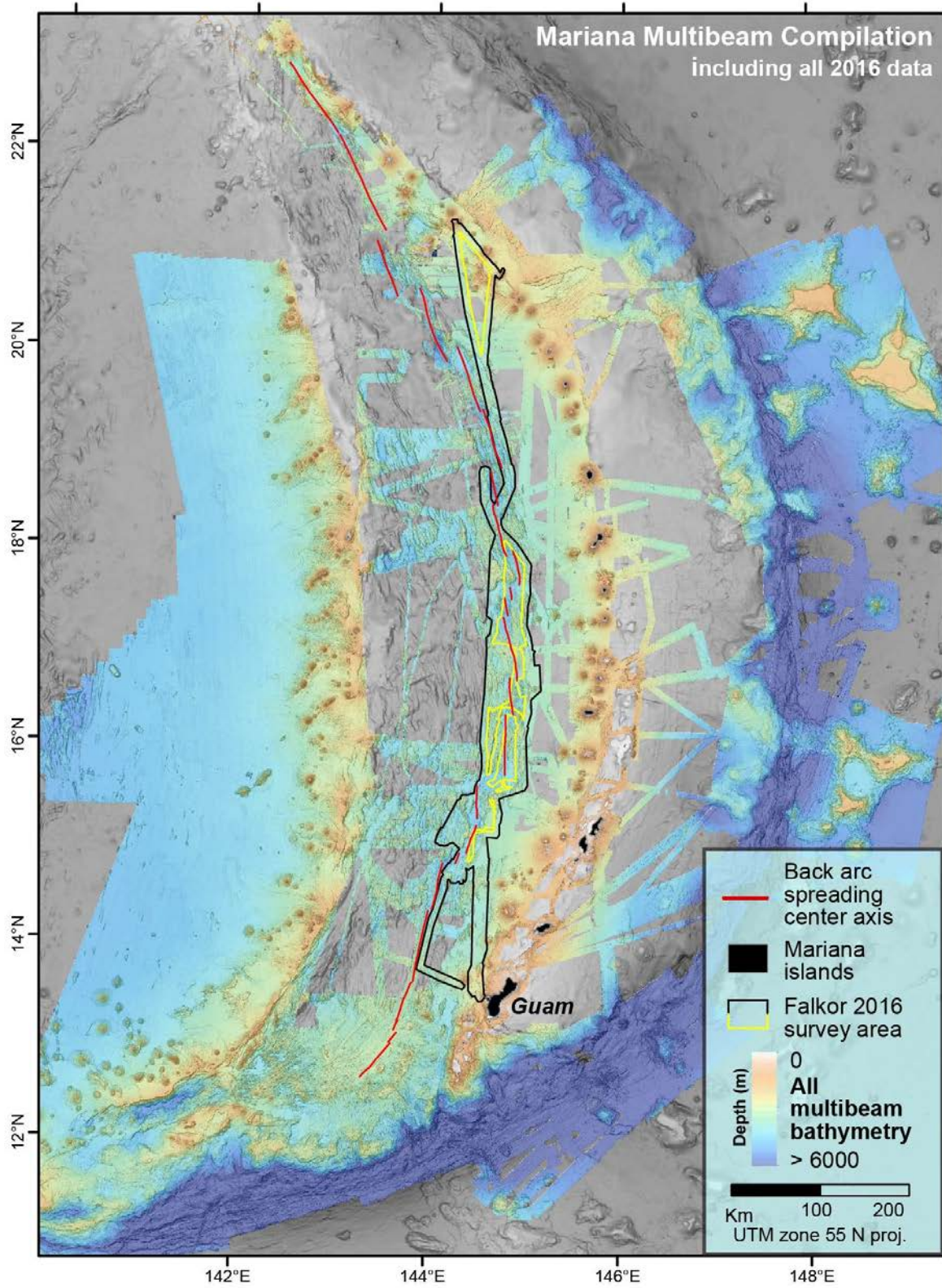


Figure 3. Compilation of all available multibeam bathymetry data from the Mariana region, showing the data collected during FK161129